

Root o45 Side Table

Design Rodolfo Dordoni

Technical Information



Striking a perfect balance between solidity and lightness, ROOT is an extremely versatile collection of outdoor tables, perfect for both residential and professional use. The harmonious dimensions of the coffee table see a slender top supported by a central solid teak leg with four feet, rendering it suitable for any style and outdoor setting. Simple and unfussy, ROOT is a true must-have owing to its versatility of use and absolutely transversal form. As simple as it is elegant, this collection can easily be combined with any outdoor sofa or armchair, creating an intimate area for relaxing or enjoying a coffee with friends.

TECHNICAL INFORMATION

DESCRIPTION
Side table for outdoor use.

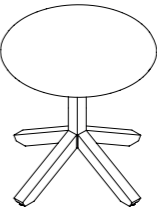
STRUCTURE
Teak.

TOP
Gres natural, stone or glazed gres.

WEIGHT
Structure + gres top 8 kg
Structure + Stone/glazed gres top 13 kg

STORAGE COVER
Not available.

DIMENSION
Ø45 × H 44 cm
Ø 17" ³/₄ × H 17" ³/₈



Materials

STRUCTURE

TOP / GRES

TOP / STONE

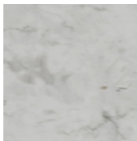
TOP / GLAZED GRES



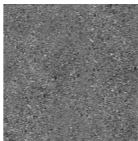
Teak



Natural



Carrara
marble



Luna stone



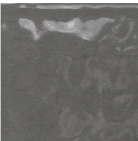
Farsena



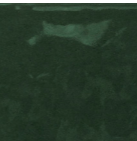
Ice



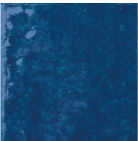
Water



Storm



Forest



Sapphire